



# GAT MONTHLY MEMBERSHIP PROGRESS REPORT

Results as of: 5/31/2026

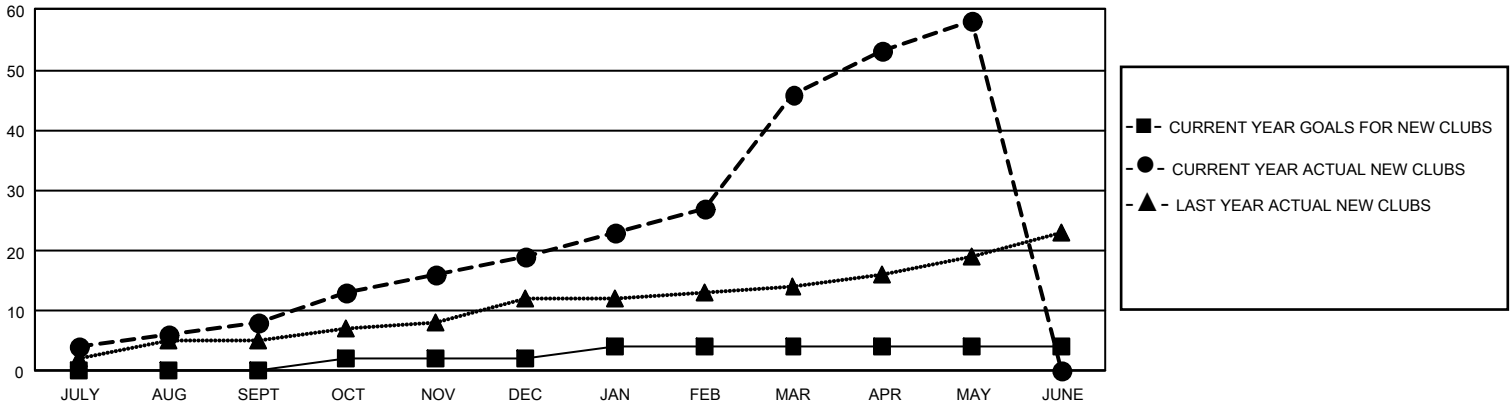
## GMT Constitutional Area 6 - S, Group B

REPORT DOES NOT INCLUDE CLUBS IN UNDISTRICTED AREAS.

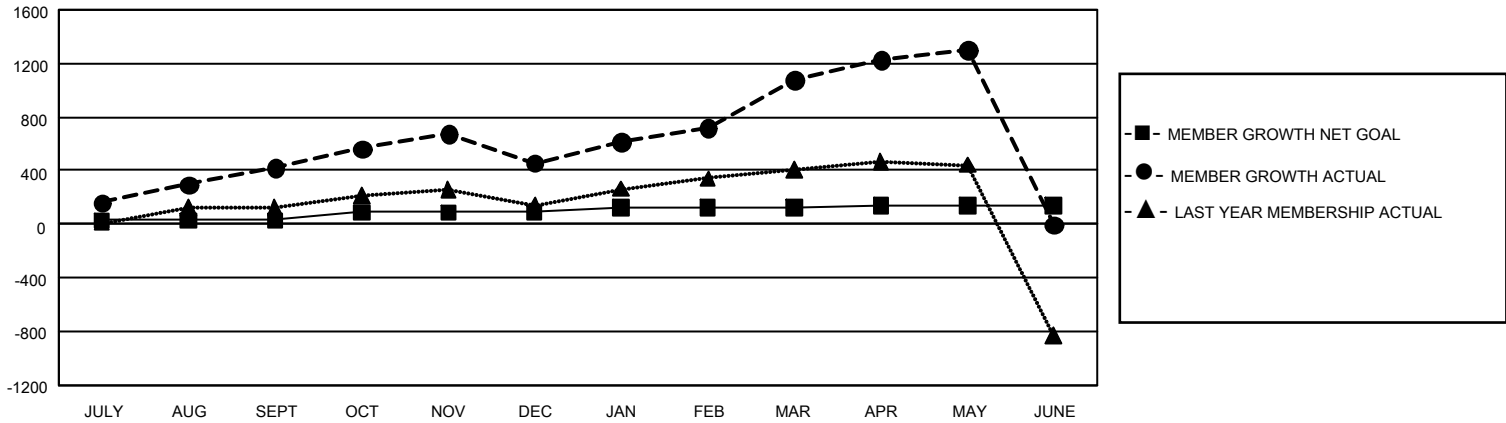
| Clubs                 |               |           |               |
|-----------------------|---------------|-----------|---------------|
| RESULTS FOR 2025-2026 |               |           |               |
| QUARTER               | NEW CLUB GOAL | NEW CLUBS | DROPPED CLUBS |
| JULY/AUG/SEPT         | 0             | 8         | 3             |
| OCT/NOV/DEC           | 6             | 11        | 9             |
| JAN/FEB/MAR           | 6             | 27        | 4             |
| APR/MAY/JUNE          | 0             | 12        | 1             |

| Members               |                        |                      |  |
|-----------------------|------------------------|----------------------|--|
| RESULTS FOR 2025-2026 |                        |                      |  |
| QUARTER               | MEMBER GROWTH NET GOAL | MEMBER GROWTH ACTUAL | DROPPED MEMBERS ACTUAL (including transfers) |
| JULY/AUG/SEPT         | 30                     | 599                  | 132  |
| OCT/NOV/DEC           | 60                     | 531                  | 450  |
| JAN/FEB/MAR           | 35                     | 1,044                | 230  |
| APR/MAY/JUNE          | 15                     | 554                  | 259  |

GOALS AND ACTUAL NEW CLUBS CUMULATIVE



GOALS AND ACTUAL MEMBERS CUMULATIVE



|                        |   |                                 |                |
|------------------------|---|---------------------------------|----------------|
| DROPPED CLUBS: 17      | 272 CLUBS OF 502 ADDED 1 OR MORE NEW MEMBERS              | <u>GENDER DISTRIBUTION</u>      |                |
| <u>DROPPED MEMBERS</u> |   | MALE                            | 6,308 (70.10%) |
| DECEASED               | 11  | FEMALE                          | 2,691 (29.90%) |
| CLUB CANCELLED         | 223   | NON BINARY                      | 0 (0.00%)      |
| OTHER                  | 832   | PREFER NOT TO ANSWER            | 0 (0.00%)      |
| <b>TOTAL</b>           | <b>1,066</b>  | TOTAL FAMILY UNIT MEMBERS       | 5,216          |
|                        | <a href="#">CLICK HERE FOR CUMULATIVE MEMBERSHIP DATA</a> | FAMILY MEMBERS PAYING HALF DUES | 3,851          |